



KANEX[®]

Shaping the future of Fire Protection



PRODUCT CATALOG

www.kanexfire.com



WHERE TO USE?

- An extinguisher is a First-aid device which is used against the critical situations of fire only. There is no chance for testing the device while fire is going on, that's why the device must be totally reliable and user friendly.
- When it comes to application, Fire equipment needs to be identifiable, handy and appropriate for the property it is intended to protect.
- But good fire protection is about more than just having the right devices in the right places, also requires rigorous monitoring to ensure that it will perform effectively when needed.
- Everyone should be familiar with the picture symbols which identify the types of fires on which they may be used. As listed below.
- The symbol diagonal red slashes indicates a potential danger if the extinguisher is used on that particular type of fire.
- Absence of a type symbol means only that the extinguisher is not recommended as particularly effective for that classification of fire.

			Suitable for Class B and Class C fires but not for Class A
			Suitable for Class A fires but not for Class B or Class C
			Suitable for Class A and Class B fires but not for Class C

HOW TO USE?

- "KANEX" provides you a valuable user manual which contains very much needed information like how to use, install and maintenance of an extinguisher.
- The Label affixed on extinguisher body contains specific information of "HOW TO OPERATE" the particular extinguisher.
- The label instruction will change according to size and type of extinguisher.
- Every one should be aware of Instructions provided on Extinguishers.

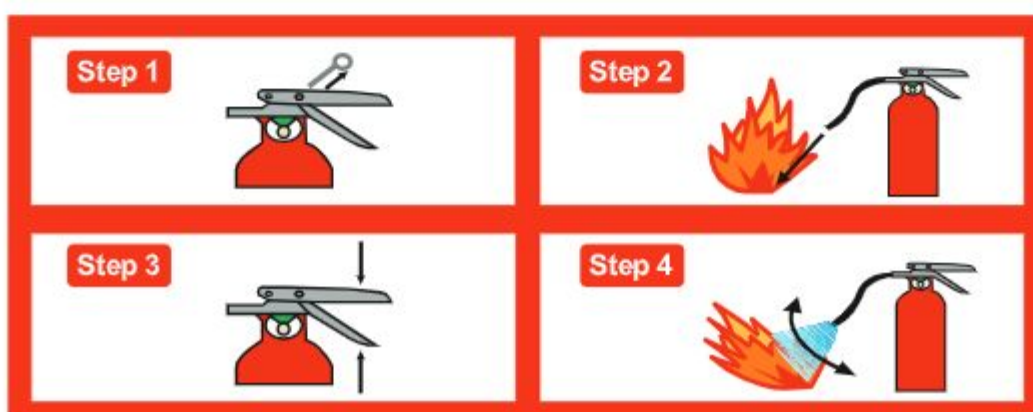


TABLE OF CONTENT

01 DRY CHEMICAL POWDER TYPE FIRE EXTINGUISHER	01
02 Dry Chemical Portable Extinguishers Stored Pressure	02
03 Dry Chemical Portable Extinguishers Stored Pressure - SS Finish	03
04 Dry Chemical Portable Extinguishers - Cartridge Operated	04
05 Multi Purpose Portable Extinguisher Stored Pressure - UL Listed	05
06 Dry Chemical Extinguisher - Urea Based Powder	07
07 Dry Chemical Mobile Extinguishers - Gas cylinder	08
08 Dry Chemical Mobile Extinguishers - Stored Pressure	09
09 CLEAN AGENT TYPE FIRE EXTINGUISHER	10
10 Clean Agent Portable Extinguishers	11
11 Clean Agent Portable Extinguishers - SS Finish	12
12 FOAM & WATER TYPE FIRE EXTINGUISHER	13
13 Foam & Water Portable Extinguishers - Stored Pressure	14
14 Foam & Water Portable Extinguishers Stored Pressure - SS Finish	15
15 Foam & Water Portable Extinguishers - Cartridge	16
16 Foam & Water Mobile Extinguishers - Gas Cartridge	17
17 Foam & Water Mobile Extinguishers - Stored Pressure	18
18 CARBON DIOXIDE TYPE FIRE EXTINGUISHER	19
19 Co ₂ Portable Extinguishers	20
20 Co ₂ Mobile Extinguishers	21
21 SPECIAL APPLICATION FIRE EXTINGUISHER	22
22 Watermist Type Stored Pressure Extinguishers	23
23 Non Magnetic - Mri Extinguishers	24
24 F Class Stored Pressure Extinguishers - SS Finish	25
25 D Type Metal Fire Extinguishers	26
26 LITHIUM ION STORED PRESSURE EXTINGUISHER	27
27 AUTOMATIC TYPE MODULAR FIRE EXTINGUISHER	29
28 Automatic Type Clean Agent Modular Extinguishers	30
29 Automatic Type Powder Modular Extinguishers	31
30 WATER MIST CUM COMPRESSED AIR FOAM SYSTEM (CAFS)	32
31 DRY CHEMICAL POWDER FILLING MACHINE	35
32 IN PANEL AUTOMATIC TUBE SUPPRESSION SYSTEM (KATS)	37
33 KITCHEN HOOD- TUBE BASED SUPPRESSION SYSTEM	41
34 INROOM- MODULAR BASED SUPPRESSION SYSTEM (KRPS)	43
35 TOTAL FLOODING SYSTEM	46



DRY CHEMICAL POWDER TYPE FIRE EXTINGUISHER SERIES

KANEX Dry Powder fire extinguishers are characterized by their high performance, simple method of operation and rapid-fire knock down capability. They are suitable for tackling fires involving freely burning materials, petrol & oils, gas & electrical equipment.

Ideal Use



Home



Office



Buildings



Warehouses



Farms



Wood working area

DRY CHEMICAL PORTABLE EXTINGUISHERS STORED PRESSURE

FEATURES

- Class A/B/C and electrical Fire: MAP powder.
- Class B/C and electrical Fire: SBC/PBC/MAP powder.
- BIS Approved and ISI marked.
- Brass chrome plated valve- squeeze operation.
- Hydraulically tested as per standard with anti-corrosive treatment.
- UV Resistant - High quality Pure Polyester (PP) powder coating.
- EPDM Rubber braided hose – High flexibility and less prone to cracks.
- Unique Gauge Testing System (UGTS) mechanism.
- Easy to maintain, recharge & service.
- Large loop Stainless steel Pull pin.
- Controllable discharge.



Class A



Class B



Class C



Electrical



PERFORMANCE DATA

MODEL (RQ Series)	KFARQ-1-90%	KFARQ-2-90%	KFARQ-4-90%	KFARQ-6-90%	KFARQ-9-90%
MODEL (HQ Series)	KFAHQ-1-UL90%	KFAHQ-2-UL90%	KFAHQ-4-UL90%	KFAHQ-6-UL90%	KFAHQ-9-UL90%
MODEL (MARQ Series)	MARQ-1-40%	MARQ-2-40%	MARQ-4-40%	MARQ-6-40%	MARQ-9-40%
MODEL (RQ Series)	KFARQ-1-50%	KFARQ-2-50%	KFARQ-4-50%	KFARQ-6-50%	KFARQ-9-50%
MODEL (BC Powder) (RQ Series)	—	—	KFSRQ-4-S ** KFSRQ-4-P **	KFSRQ-6-S KFSRQ-6-P	KFSRQ-9-S KFSRQ-9-P
Capacity	1 kg	2 kg	4 kg	6 kg	9 kg
Design	Nozzle	Nozzle	Hose & Nozzle	Hose & Nozzle	Hose & Nozzle
Fire Rating (MAP 90%)	1A : 34B	2A : 55B	4A : 144B	6A : 183B	6A : 233B
Fire Rating (As per EN) (HQ Only)	5A : 13B	5A : 21B	13A : 89B	27A : 183B	43A : 233B
Fire Rating (MAP 40%) (MARQ)	1A : 21B	1A : 21B	2A : 55B	3A : 89B	4A : 144B
Fire Rating (MAP 50%) (RQ)	1A : 21B	2A : 34B	3A : 89B	4A : 144B	6A : 183B
Fire Rating (BC Powder)	—	—	183B*	183B	233B
Height (Approx.)	325 mm	380 mm	490 mm	530 mm	575 mm
Diameter (Approx.)	86 ± 5 mm	106 ± 5 mm	140 ± 5 mm	150 ± 5 mm	180 ± 5 mm
Average Discharge time	9 Sec	14 Sec	18 Sec	24 Sec	31 Sec
Average Range of throw	2 m	2.5 m	3 m	5 m	6 m
Average % Discharge	94%	95%	94%	94%	94%
Operating Temperature	-30 °C to +60 °C				
Service/Max. service/Test Pressure	15 / 18 / 35 bar				
Expelling Agent	Nitrogen (UHP Grade)				
Empty/Full/Shipping Weight (Aprx.)	1.2 / 2.2 / 2.5 kg	1.5 / 3.5 / 3.9 kg	2.7 / 6.7 / 7.1 kg	2.9 / 8.9 / 9.4 kg	5 / 14 / 14.5 kg
Packing Standard	Corrugated Box				
Mounting Bracket	Vehicle / Wall bracket		Wall Bracket		
Approvals	BIS / CE / Factory tested				

* Indicates factory tested

** Non-ISI product

DRY CHEMICAL PORTABLE EXTINGUISHERS STORED PRESSURE - SS FINISH

FEATURES

- Smooth Finish stainless steel body to give aesthetic impression.
- Class A/B/C and electrical Fire: MAP powder.
- UL listed MAP powder
- BIS Approved and ISI marked.
- CE marked brass chrome plated valve- squeeze operation.
- Hydraulically tested as per standard with anti-corrosive treatment.
- Helium Leak Detection- tested leak rate up to 1×10^{-8} mbar.l/sec
- EPDM Rubber braided hose – High flexibility and less prone to cracks.
- Unique Gauge Testing System (UGTS) mechanism.
- Easy to maintain, recharge & service.
- Large loop Stainless steel Pull pin.
- Controllable discharge



Class A



Class B



Class C



Electrical



PERFORMANCE DATA

MODEL	KFASSHQ-2-50% KFASSHQ-2-90% KFASSHQ-2-UL90%	KFASSHQ-4-50% KFASSHQ-4-90% KFASSHQ-4-UL90%	KFASSHQ-6-50% KFASSHQ-6-90% KFASSHQ-6-UL90%
Capacity	2 kg	4 kg	6 kg
Design	Hose & Nozzle	Hose & Nozzle	Hose & Nozzle
Fire Rating (MAP-50%)	2A : 34B	3A : 89B	4A : 144B
Fire Rating (MAP-90%)	2A : 55B	4A : 144B	6A : 183B
Fire Rating (As per EN)	5A : 21B	13A : 89B	27A : 183B
Height (Approx)	440 mm	500 mm	550 mm
Diameter (Approx)	110 ± 5 mm	140 ± 5 mm	150 ± 5 mm
Average Discharge time	14 Sec	18 Sec	24 Sec
Average Range of throw	2 m	3 m	5 m
Average % Discharge	94%	94%	94%
Operating Temperature	-30 °C to +60 °C	-30 °C to +60 °C	-30 °C to +60 °C
Service/Max. service/Test Pressure	15 / 18 / 35 bar		
Expelling Agent	Nitrogen (UHP Grade)		
Empty/Full/Shipping Weight (Aprx.)	1.5 / 3.5 / 3.9 kg	2.5 / 6.5 / 6.9 kg	2.8 / 8.8 / 9.3 kg
Packing Standard	Corrugated Box		
Mounting Bracket	Wall Bracket		
Approvals	BIS & CE		

DRY CHEMICAL PORTABLE EXTINGUISHERS CARTRIDGE OPERATED

FEATURES

- Class A/B/C and electrical Fire: MAP powder.
- Class B/C and electrical Fire: SBC/PBC/MAP powder.
- BIS Approved and ISI marked.
- Brass chrome plated valve- squeeze operation.
- Rugged cartridge type
- Hydraulically tested as per standard with anti-corrosive treatment.
- UV Resistant - High quality Pure Polyester (PP) powder coating.
- EPDM Rubber braided hose - High flexibility and less prone to cracks.
- Easy to maintain, recharge & service.
- Large loop Stainless steel Pull pin.



Class A



Class B



Class C



Electrical



PERFORMANCE DATA

MODEL (BC POWDER)	KFDRQ-4-S KFDRQ-4-P	KFDRQ-6-S KFDRQ-6-P	KFDRQ-9-S KFDRQ-9-P
MODEL (MAP POWDER) (RQ Series)	KFDRQ-4-50% KFDRQ-4-90%	KFDRQ-6-50% KFDRQ-6-90%	KFDRQ-9-50% KFDRQ-9-90%
MODEL (HQ Series)	KFDHQ-4-UL90%	KFDHQ-6-UL90%	KFDHQ-9-UL90%
Capacity	4 kg	6 kg	9 kg
Design	Hose & Nozzle	Hose & Nozzle	Hose & Nozzle
Fire Rating (SBC / PBC) (RQ Only)	183B	183B	233B
Fire Rating (MAP-50%) (RQ Only)	3A : 89B	4A : 144B	6A : 183B
Fire Rating (MAP-90%) (RQ & HQ)	4A : 144B	6A : 183B	6A : 233B
Fire Rating (As per EN) (HQ Only)	13A : 89B	27A : 183B	43A : 233B
Height (Approx)	510 mm	540 mm	585 mm
Diameter (Approx)	140 ± 5 mm	150 ± 5 mm	180 ± 5 mm
Average Discharge time	18 Sec	24 Sec	31 Sec
Average Range of throw	3 m	5 m	6 m
Average % Discharge	94%	94%	94%
Operating Temperature	-30 °C to +60 °C		
Service/Max. service/Test Pressure	15 / 18 / 35 bar		
Expelling Agent	CO2 Gas		
CO2 Gas Cartridge	120 gm	120 gm	200 gm
Empty/Full/Shipping Weight (Aprx.)	3.7 / 7.7 / 8.2 kg	4 / 10 / 10.5 kg	6.3 / 15.3 / 15.8 kg
Packing Standard	Corrugated Box		
Mounting Bracket	Wall Bracket		
Approvals	BIS (RQ Series) / BIS & CE (HQ Series)		

Note 1. SS Lever & handle available on request

MULTI PURPOSE PORTABLE EXTINGUISHER STORED PRESSURE - UL LISTED

FEATURES

- Class A/B/C and electrical Fire
- UL Listed - MAP 90% powder.
- Stainless steel handles and levers.
- Large loop Stainless steel Pull pin.
- Aluminum nozzle.
- Anodized Aluminum valve with controllable discharge mechanism.
- Rugged heavy duty Booster hoses with Stainless steel crimping.
- Steel cylinder complete with protective skirt, MIG welded by 6G certified welders.
- Pure polyester powder coated in advance automatic powder coating machine.
- 12-year periodic hydrostatic test interval.
- Six-year warranty.



Class A



Class B



Class C



UL FILE NO.
EX28681

LISTED

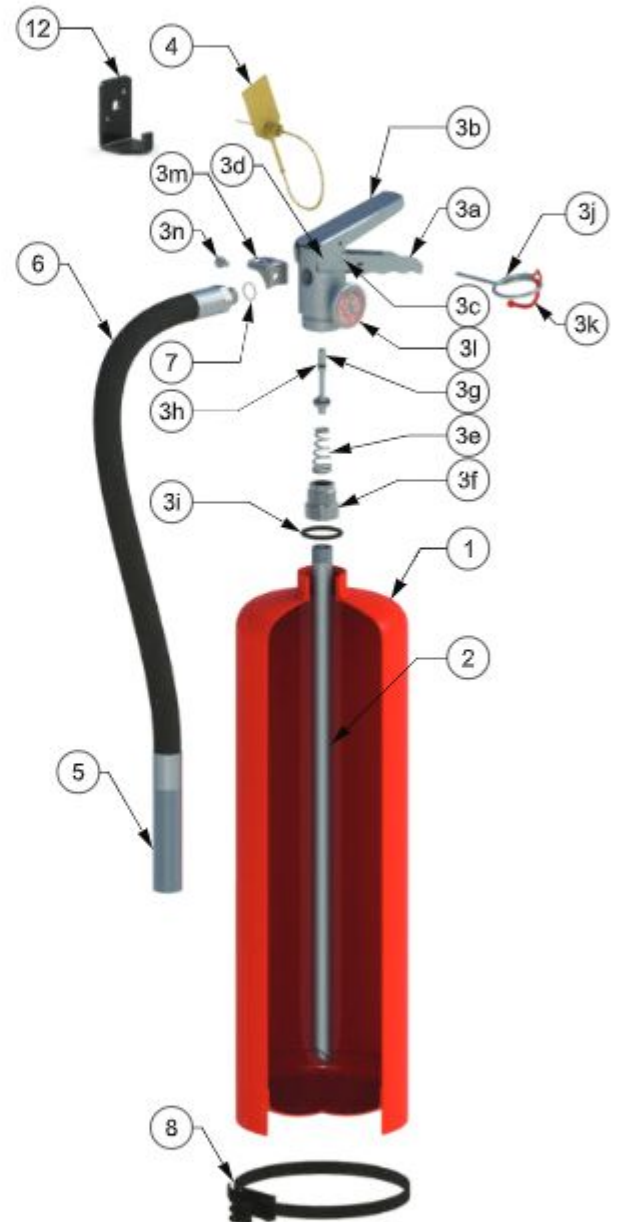
PERFORMANCE DATA

MODEL	KFAHQ-2.5-UL	KFAHQ-10-UL	KFAHQ-20-UL
Capacity	2.5 lbs	10 lbs	20 lbs
Filled agent weight (lbs / kg)	2.64 lbs (1.2 kg)	10.13 lbs (4.6 kg)	20.92 lbs (9.5 kg)
Design	Nozzle	Hose & Nozzle	
UL Fire Rating	1 A : 10 BC	4 A : 80 BC	4 A : 80 BC
Height (inch / cm)	15.35" (39 cm)	19.68" (50 cm)	23.42" (59.5 cm)
Diameter (inch / cm)	3.39" (8.6 cm)	5.12" (13 cm)	7.09" (18 cm)
Average Discharge time	8-10 Sec	20-23 Sec	30-35 Sec
Average Range of flow	13 - 16 feet (4 - 5 meter)	16 - 19 feet (5 - 6 meter)	19 - 23 feet (6 - 7 meter)
Operating Temperature	-40 °C to +49 °C (-40 °F to 120 °F)		
Operating Pressure @70°F (21°C)	195 psi		
Empty Weight (Average)	3.3 lbs (1.5 kg)	6.6 lbs (3.2 kg)	12.1 lbs (5.5 kg)
Full Weight (Average)	6.1 lbs (2.8 kg)	16.7 lbs (7.8 kg)	33 lbs (15.0 kg)
Shipping Weight (Average)	6.8 lbs (3.1 kg)	17.4 lbs (8.2 kg)	34.1 lbs (15.5 kg)
Mounting Bracket	Vehicle bracket	Wall mounting bracket	
Approvals	UL		

MULTI PURPOSE PORTABLE EXTINGUISHER STORED PRESSURE - UL LISTED

PARTS LIST

Sr. No.	PART / ITEM	2.5 lbs Item Code	10 lbs Item Code	20 lbs Item Code
1	Powder coated body	PCOATEDULBODY-001	PCOATEDULBODY-002	PCOATEDULBODY-003
2	Aluminum Syphon tube	B207018	B207019	B207020
3	Valve Assembly		B106022	
3a	Valve Handle		B506006	
3b	Valve Lever		B506007	
3c	Rivet small		B506008	
3d	Rivet big		B506009	
3e	Spring		B506010	
3f	Syphon tube adapter		B506011	
3g	Spindle		B506012	
3h	O-ring for the spindle		B506013	
3i	O-ring for the valve		B506014	
3j	Safety Pin		B506015	
3k	Safety Pin string		B506005	
3l	Pressure gauge / Indicator		B606008	
3m	Mounting Buckle	--	B506015	
3n	Mounting Buckle Screw	--	B506016	
4	Tamper seal		B411007	
5	Discharge Nozzle	B109015	R109002	R109003
6	Discharge Hose	--	B108017	B108018
7	Discharge Hose / Nozzle O-Ring		B408001	
8	Belt	--	B211004	B211004
9	2.5 lbs Fire Extinguisher Label	B110059	B110060	B110061
10	Kanex Brand sticker		B110062	
11	MAP-90% UL CR Powder		B105004	
12	Mounting bracket	B212007	B112015	B112016



DRY CHEMICAL EXTINGUISHER UREA BASED POWDER

FEATURES

- Potassium Bi carbonate Urea complex powder (Density 0.5 - 0.7 gm/ml) is the most trusted high performance dry chemical powder for high risk firefighting applications.
- Unique Gauge Testing System (UGTS) mechanism in case of Stored pressure type fire extinguisher Co2 cartridge confirms to IS:4947 for cartridge type fire extinguisher
- CE marked, brass chrome plated valve with Controllable discharge mechanism and Large loop Stainless steel Pull pin EPDM Rubber braided hose is far more flexible than the PVC braided hoses and also far less prone to cracks
- Internally Epoxy Polyester (EP) and Externally Pure Polyester (PP) powder coated (UV Resistant)
- Hydraulically tested as per standard requirements
- Anti-corrosive treatment: Semi Automatic Seven tank Hot dipping Phosphate treatment Process
- Helium Leak Detection tested for leakage, in case of stored pressure type fire extinguisher leak rate up to 1×10^{-8} mbar.l/sec.
- Easy to maintain, recharge & service



Class B



Class C



Electrical

PERFORMANCE DATA

TYPE	STORED PRESSURE				CARTRIDGE PRESSURE		
	KFMNXSHQ-2	KFMNXSHQ-4	KFMNXSHQ-6	KFMNXSHQ-9	KFMNXCHQ-4	KFMNXCHQ-6	KFMNXCHQ-9
MODEL (MONNEX)	KFMNXSHQ-2	KFMNXSHQ-4	KFMNXSHQ-6	KFMNXSHQ-9	KFMNXCHQ-4	KFMNXCHQ-6	KFMNXCHQ-9
MODEL (UREA COMPLEX)	KFURSHQ-2	KFURSHQ-4	KFURSHQ-6	KFURSHQ-9	KFURCHQ-4	KFURCHQ-6	KFURCHQ-9
Capacity / Filled Powder	2 kg / 1 kg	4 kg / 2 kg	6 kg / 4 kg	9 kg / 6 kg	4 kg / 2 kg	6 kg / 4 kg	9 kg / 6 kg
Design	Nozzle	Hose & Nozzle			Hose & Nozzle		
Fire Rating					183B	183B	233B
Fire Rating (As per EN)	144B	183B	233B	233B	183B	183B	233B
Height (Approx)	380 mm	490 mm	530 mm	575 mm	510 mm	540 mm	585 mm
Diameter (Approx)	106 ± 5 mm	140 ± 5 mm	150 ± 5 mm	180 ± 5 mm	140 ± 5 mm	150 ± 5 mm	180 ± 5 mm
Average Discharge time	10 Sec	16 Sec	21 Sec	26 Sec	16 Sec	21 Sec	26 Sec
Average Range of throw	3 m	5 m	6 m	6 m	5 m	6 m	6 m
Average % Discharge	92%	92%	93%	93%	92%	93%	93%
Operating Temperature	-30 °C to +60 °C				-30 °C to +60 °C		
Service / Max. service / Test Pr.	15 / 18 / 35 bar				15 / 18 / 35 bar		
Expelling Agent	Nitrogen (UHP Grade)				CO2 Gas		
CO2 cartridge Capacity					120 gm	200 gm	200 gm
Empty/Full/Shipping Weight (Aprx.)	1.5 / 2.5 / 2.8 kg	2.7 / 4.7 / 5.1 kg	2.9 / 6.9 / 7.4 kg	5 / 11 / 11.5 kg	3.7 / 5.7 / 6.1 kg	4 / 8 / 8.4 kg	6.3 / 12.3 / 12.8 kg
Packing Standard	Corrugated Box				Corrugated Box		
Mounting Bracket	Wall Bracket				Wall Bracket		
Approvals	CE				BIS & CE		

Note
1. SB Lever & handle available on request

DRY CHEMICAL MOBILE EXTINGUISHERS EXTERNAL GAS CYLINDER

FEATURES

- SBC/PBC based Dry Chemical powder capable of fighting against class B, C & Electrically started fires
- MAP Mono Ammonium Phosphate dry chemical powder capable of fighting against class A, B, C & Electrically started fires
- BIS Approved and ISI marked
- Hydraulically tested as per standard
- External CO₂ gas cylinder (PESO Approved)
- High quality Pure Polyester (PP) powder coating (UV Resistant)
- Controllable discharge
- Brass forged cap with auto safety release mechanism at 21 kg/cm²
- PVC Braided hose with SS protection spring of 300mm to avoid kink and shut off nozzle
- Easy & more economical to refill maintain & service
- Conformity standard IS 16018:2012



Class A
(For MAP only)



Class B



Class C



Electrical



PERFORMANCE DATA

MODEL (BC POWDER)	KFDRQ-25-S KFDRQ-25-P	KFDRQ-50-S KFDRQ-50-P	KFDRQ-75-S KFDRQ-75-P	KFDRQ-150-S KFDRQ-150-P
MODEL (MAP POWDER)	KFDRQ-25-50% KFDRQ-25-90%	KFDRQ-50-50% KFDRQ-50-90%	KFDRQ-75-50% KFDRQ-75-90%	KFDRQ-150-50% KFDRQ-150-90%
Capacity	25 kg	50 kg	75 kg	150 kg
Design	Hose & Nozzle	Hose & Nozzle	Hose & Nozzle	Hose & Nozzle
Fire Rating (MAP Powder)	20A : 233B	20A : 233B	20A : 233B	—
Fire Rating (BC Powder)	233B	233B	233B	—
Height (Approx)	980 mm	1020 mm	1030 mm	1320 mm
Diameter (Approx)	300 ± 10 mm	400 ± 10 mm	400 ± 10 mm	480 ± 10 mm
Average Discharge time	25-30 Sec	40-50 Sec	50-60 Sec	70-80 Sec
Average Range of throw	6 m	8 m	10 m	12 m
Average % Discharge	91%	90%	90%	91%
Operating Temperature	-30 °C to +55 °C			
Service / Max Service / Test Pr.	14 / 17 / 35 bar			
Expelling Agent	CO ₂ Gas			
CO ₂ Gas Capacity	1 kg	2 kg	2 kg	4.5 kg
Empty/Full/Shipping Weight (Aprx.)	59 / 84 / 85 kg	70 / 120 / 121 kg	75 / 150 / 151 kg	110 / 260 / 262 kg
Packing Standard	Corrugated paper & Jute Bags			
Approval	BIS			

DRY CHEMICAL MOBILE EXTINGUISHERS STORED PRESSURE

FEATURES

- SBC/PBC based Dry Chemical powder capable of fighting against class B, C & Electrically started fires
- MAP Mono Ammonium Phosphate dry chemical powder capable of fighting against class A, B, C & Electrically started fires
- BIS Approved and ISI marked
- Hydraulically tested as per standard
- Pressurized with UHP grade Nitrogen gas
- High quality Pure Polyester (PP) powder coating (UV Resistant)
- Controllable discharge
- Brass forged valve with auto safety release mechanism
- Easy & more economical to refill, maintain & service
- PVC Braided hose with SS protection spring of 300mm to avoid kink and shut off nozzle Conformity
- standard IS 16018:2012



Class A
(For MAP only)

Class B

Class C

Electrical

PERFORMANCE DATA

MODEL (BC POWDER)	KFDSRQ-25-S KFDSRQ-25-P	KFDSRQ-50-S KFDSRQ-50-P	KFDSRQ-75-S KFDSRQ-75-P
MODEL (MAP POWDER)	KFDSRQ-25-50% KFDSRQ-25-90%	KFDSRQ-50-50% KFDSRQ-50-90%	KFDSRQ-75-50% KFDSRQ-75-90%
Capacity	25 kg	50 kg	75 kg
Design		Hose & Nozzle	
Fire Rating (MAP Powder)	20A : 233B	20A : 233B*	20A : 233B*
Fire Rating (BC Powder)	233B*	233B*	233B*
Height (Approx)	980 mm	1020 mm	1030 mm
Diameter (Approx)	300 ± 10 mm	400 ± 10 mm	400 ± 10 mm
Average Discharge time	30-40 Sec	60-70 Sec	75-85 Sec
Min. Range of throw		6 m	
Min. % Discharge		85 %	
Operating Temperature		-30 °C to +55 °C	
Service / Max Service / Test Pr.		15 / 18 / 35 bar	
Expelling Agent		Nitrogen UHP grade	
Empty/Full/Shipping Weight (Aprx.)	35 / 60 / 62 kg	55 / 105 / 106 kg	65 / 140 / 142 kg
Packing Standard		Corrugated paper & Jute Bags	
Approval	BIS (Only for MAP Powder)		Under Approval



CLEAN AGENT TYPE FIRE EXTINGUISHER SERIES

Kanex's Clean Agent Fire Extinguishers offers great performance and reliability. The cleanest and most powerful agent with zero ODP (Ozone Depletion Potential) and lowest GWP available. These extinguishers can be used on sensitive equipment as it doesn't leave any residue. Hence, this non-residue forming extinguisher is not only eco-friendly but also perfect for electrical equipment and even flammable liquids.

Ideal Use



Switch gears



Office



Sensitive data storage



Aircraft's



Boats



Laboratories

CLEAN AGENT PORTABLE EXTINGUISHER

FEATURES

- For Class A/B/C and electrical Fire.
- HFC 236fa/FE36 clean agent gas : UL listed and ODP = 0
- BIS Approved and ISI marked.
- Brass chrome plated valve- squeeze operation.
- UV Resistant - High quality Pure Polyester (PP) powder coating.
- Unique Gauge Testing System (UGTS) mechanism.
- Easy to maintain, recharge & service.
- Large loop Stainless steel Pull pin.
- Controllable discharge.



Class A



Class B



Class C



Electrical



Chemours (Earlier known as DuPont)
FE 36 Clean Agent Approvals

PERFORMANCE DATA

MODEL (RQ SERIES)	KCARQ-2	KCARQ-4	KCARQ-6
MODEL (HQ SERIES)	KCAHQ-2-FE36	KCAHQ-4-FE36	KCAHQ-6-FE36
Capacity	2 kg	4 kg	6 kg
Design	Hose & Nozzle	Hose & Nozzle	Hose & Nozzle
Fire Rating	1A : 21B	2A : 34B	2A : 55B
Fire Rating (As per EN)	5A : 21B	8A : 34B	8A : 55B
Height (Approx.)	410 mm	490 mm	530 mm
Diameter (Approx.)	106 ± 5 mm	140 ± 5 mm	150 ± 5 mm
Average Discharge time	9 Sec	14 Sec	22 Sec
Average Range of throw	3 m	3.5 m	4 m
Average % Discharge	96%	96%	96%
Operating Temperature	-30 °C to +60 °C		
Service/Max. service/Test Pressure	10 / 12 / 35 bar		
Expelling Agent	Nitrogen (UHP Grade)		
Empty/Full/Shipping Weight (Aprx.)	1.9 / 3.9 / 4.3 kg	2.7 / 6.7 / 7.1 kg	2.9 / 8.9 / 9.4 kg
Packing Standard	Corrugated Box		
Mounting Bracket	Vehicle / Wall bracket	Wall Bracket	
Approvals	BIS (RQ Series) / BIS & CE (HQ Series)		

* Indicates factory tested

** RQ Series also available with other Clean Agent gas

Comparative Advantages of FE - 36

It does not contain d-limoene, which is flammable non volatile residue. Extinguishing agents containing d-limoene may leave a coating of d-limoene. In FE-36 variation between atmospheric temperature and boiling point is less, hence it does not leave any condensed moisture as in case of Co2.

Chemours FE 36 is not scheduled for phase out as HCFC like Halotron I, which contains Chlorine. The B.Pt of FE 36 is -1.40C, hence is discharged as gas, unlike Halotron I, which comes out as a liquid. The Extinguishing concentration of FE 36 is well above NOAEL and LOAEL values. NO CL2 BR2 .



CLEAN AGENT PORTABLE EXTINGUISHER

SS FINISH

FEATURES

- For Class A/B/C and electrical Fire.
- HFC 236fa/FE36 clean agent gas : UL listed and ODP = 0
- BIS Approved and ISI marked.
- Smooth Finish stainless steel body to give aesthetic impression.
- CE marked brass chrome plated valve- squeeze operation.
- UV Resistant - High quality Pure Polyester (PP) powder coating.
- Unique Gauge Testing System (UGTS) mechanism.
- Helium Leak Detection- tested leak rate up to 1×10^{-8} mbar.l/sec
- Easy to maintain, recharge & service.
- Large loop Stainless steel Pull pin.
- Controllable discharge.



PERFORMANCE DATA

MODEL	KCASSHQ-2-FE36	KCASSHQ-4-FE36	KCASSHQ-6-FE36
Capacity	2 kg	4 kg	6 kg
Design	Hose & Nozzle	Hose & Nozzle	Hose & Nozzle
Fire Rating	1A : 21B	2A : 34B	2A : 55B
Fire Rating (As per EN)	5A : 21B	8A : 34B	8A : 55B
Height (Approx.)	440 mm	500 mm	550 mm
Diameter (Approx.)	110 ± 5 mm	140 ± 5 mm	150 ± 5 mm
Average Discharge time	9 Sec	14 Sec	22 Sec
Average Range of throw	3 m	3.5 m	4 m
Average % Discharge	96%	96%	96%
Operating Temperature	-30 °C to +60 °C		
Service/Max. service/Test Pressure	10 / 12 / 35 bar		
Expelling Agent	Nitrogen (UHP Grade)		
Empty/Full/Shipping Weight (Aprx.)	1.6 / 3.6 / 4.0 kg	2.5 / 6.5 / 6.9 kg	2.8 / 8.8 / 9.3 kg
Packing Standard	Corrugated box		
Mounting Bracket	Vehicle / Wall bracket	Wall Bracket	
Approvals	BIS & CE		

Comparative Advantages of FE - 36

It does not contain d-limoene, which is flammable non volatile residue. Extinguishing agents containing d-limoene may leave a coating of d-limoene. In FE-36 variation between atmospheric temperature and boiling point is less, hence it does not leave any condensed moisture as in case of Co2.

Chemours FE 36 is not scheduled for phase out as HCFC like Halotron I, which contains Chlorine. The B.Pt of FE 36 is -1.40C, hence is discharged as gas, unlike Halotron I, which comes out as a liquid. The Extinguishing concentration of FE 36 is well above NOAEL and LOAEL values. NO CL2 BR2 .

Chemours (Earlier known as DuPont)
FE 36 Clean Agent Approvals





FOAM & WATER TYPE FIRE EXTINGUISHER SERIES

KANEX Foam and Water fire extinguisher are ideal for fires involving volatile liquids and freely burning materials such as paper, cloth, wood and furniture. The foam forms a seal over the surface to prevent re-ignition. Ideal for multi-risk usage and also applicable against class 'A' hazards such as wood, cloth, trash and other materials that leave an ash.

Ideal Use



Plywood companies (WATER)



Petrol Stations (FOAM)



Restaurants

FOAM & WATER PORTABLE EXTINGUISHERS STORED PRESSURE

FEATURES

- Class A/B Fire: AFFF (Aqueous Film Forming Foam).
- Class A Fire: Water.
- BIS Approved and ISI marked.
- Brass chrome plated valve- squeeze operation.
- Air aspirated nozzle to provide high fire rating (Foam extinguisher)
- Hydraulically tested as per standard with anti-corrosive treatment.
- UV Resistant - High quality Pure Polyester (PP) powder coating.
- EPDM Rubber braided hose - High flexibility and less prone to cracks.
- Unique Gauge Testing System (UGTS) mechanism.
- Easy to maintain, recharge & service.
- Large loop Stainless steel Pull pin.
- Controllable discharge.



Water Type Suitable for Class A Fire Risk

Foam Type Suitable for Class A and Class B Fire Risk



Class A



Class A



Class B



PERFORMANCE DATA

TYPE	FOAM		WATER	
	KFMSRQ-6	KFMSRQ-9	KFWSRQ-6	KFWSRQ-9
MODEL (RQ Series)	KFMSRQ-6	KFMSRQ-9	KFWSRQ-6	KFWSRQ-9
MODEL (HQ Series)	KFMHQ-6-AR	KFMHQ-9-AR	—	—
Capacity	6 Ltr	9 Ltr	6 Ltr	9 Ltr
Design	Hose & Nozzle	Hose & Nozzle	Hose & Nozzle	Hose & Nozzle
Fire Rating	3A : 89B*	4A : 233B	2A*	3A
Fire Rating (As per EN) (HQ Only)	13A : 89B	27A : 183B	2A*	3A
Height (Approx.)	530 mm	575 mm	530 mm	575 mm
Diameter (Approx.)	150 ± 5 mm	180 ± 5 mm	150 ± 5 mm	180 ± 5 mm
Average Discharge time	22 Sec	35 Sec	22 Sec	35 Sec
Average Range of throw	6 m	6 m	5 m	6 m
Average % Discharge	96%	97%	96%	97%
Operating Temperature	+5 °C to +60 °C			
Service/Max. service/Test Pressure	15 / 18 / 35 bar			
Expelling Agent	Nitrogen (UHP Grade)			
Empty/Full/Shipping Weight (Aprx.)	3.3 / 9.3 / 9.7 kg	5 / 14 / 14.5 kg	3.3 / 9.3 / 9.7 kg	5 / 14 / 14.5 kg
Packing Standard	Corrugated box			
Mounting Bracket	Wall Bracket			
Approvals		BIS		BIS
Approvals	CE	BIS & CE		—

Note

- * Indicates factory tested
- SS Lever & handle available on request

Caution : Don't use on Electrical Fire.

FOAM & WATER PORTABLE EXTINGUISHERS STORED PRESSURE - SS FINISH

FEATURES

- Smooth Finish stainless steel body to give aesthetic impression.
- Class A/B Fire: AR-AFFF (Aqueous Film Forming Foam).
- Class A Fire: Water.
- BIS Approved and ISI marked.
- CE marked brass chrome plated valve- squeeze operation.
- Hydraulically tested as per standard with anti-corrosive treatment.
- Helium Leak Detection- tested leak rate up to 1×10^{-8} mbar.l/sec
- EPDM Rubber braided hose – High flexibility and less prone to cracks.
- Unique Gauge Testing System (UGTS) mechanism.
- Easy to maintain, recharge & service.
- Large loop Stainless steel Pull pin.
- Controllable discharge.



Water Type Suitable for Class A Fire Risk

Foam Type Suitable for Class A and Class B Fire Risk



Class A



Class A



Class B



PERFORMANCE DATA

MODEL	FOAM		WATER	
	KFMSSHQ-6-AR	KFMSSHQ-9-AR	KFWSSHQ-6	KFWSSHQ-9
Capacity	6 Ltr	9 Ltr	6 Ltr	9 Ltr
Design	Hose & Nozzle	Hose & Nozzle	Hose & Nozzle	Hose & Nozzle
Fire Rating	3A : 89B*	4A : 233B	2A*	3A
Fire Rating (As per EN)	13A : 89B	27A : 183B	13A	27A
Height (Approx.)	550 mm	610 mm	550 mm	610 mm
Diameter (Approx.)	150 ± 5 mm	180 ± 5 mm	150 ± 5 mm	180 ± 5 mm
Average Discharge time	22 Sec	35 Sec	22 Sec	35 Sec
Average Range of throw	6 m	6 m	5 m	6 m
Average % Discharge	96%	97%	96%	97%
Operating Temperature	+5 °C to +60 °C			
Service/Max. service/Test Pressure	15 / 18 / 35 bar			
Expelling Agent	Nitrogen (UHP Grade)			
Empty/Full/Shipping Weight (Aprx.)	2.8 / 8.8 / 9.2 kg	3.6 / 12.6 / 13.1 kg	2.8 / 8.8 / 9.2 kg	3.6 / 12.6 / 13.1 kg
Packing Standard	Corrugated box			
Mounting Bracket	Wall Bracket			
Approvals	CE	BIS & CE	CE	BIS & CE

Note
1. * Indicates factory tested

Caution : Don't use on Electrical Fire.

FOAM & WATER PORTABLE EXTINGUISHERS CARTRIDGE OPERATED

FEATURES

- Class A/B Fire: AFFF (Aqueous Film Forming Foam).
- Class A Fire: Water.
- BIS Approved and ISI marked.
- Brass chrome plated valve- squeeze operation.
- Rugged cartridge type
- Hydraulically tested as per standard with anti-corrosive treatment.
- UV Resistant - High quality Pure Polyester (PP) powder coating.
- EPDM Rubber braided hose - High flexibility and less prone to cracks.
- Easy to maintain, recharge & service.
- Large loop Stainless steel Pull pin.



Water Type Suitable for Class A Fire Risk

Foam Type Suitable for Class A and Class B Fire Risk



Class A



Class A



Class B



PERFORMANCE DATA

MODEL	FOAM		WATER	
	KFMCQRQ-6	KFMCQRQ-9	KFWCRQ-6	KFWCRQ-9
Capacity	6 Ltr	9 Ltr	6 Ltr	9 Ltr
Design	Hose & Nozzle	Hose & Nozzle	Hose & Nozzle	Hose & Nozzle
Fire Rating	3A : 144B*	4A : 233B	2A*	3A
Height (Approx.)	540 mm	585 mm	540 mm	585 mm
Diameter (Approx.)	150 ± 5 mm	180 ± 5 mm	150 ± 5 mm	180 ± 5 mm
Average Discharge time	22 Sec	35 Sec	21 Sec	35 Sec
Average Range of throw	4 m	6 m	5 m	6 m
Average % Discharge	96%	97%	96%	97%
Operating Temperature	+5 °C to +60 °C			
Service/Max. service/Test Pressure	15 / 18 / 35 bar			
Expelling Agent	Carbon Dioxide gas			
CO ₂ gas Cartridge (gm)	60 Grams			
Empty/Full/Shipping Weight (Aprx.)	3.8 / 9.8 / 10.2 kg	6.1 / 15.1 / 15.6 kg	3.8 / 9.8 / 10.2 kg	6.1 / 15.1 / 15.6 kg
Packing Standard	Corrugated box			
Mounting Bracket	Wall Bracket			
Approvals	—	BIS	—	BIS

Note

1. * Indicates factory tested
2. SS Lever & handle available on request

Caution : Don't use on Electrical Fire.

FOAM & WATER MOBILE EXTINGUISHERS GAS CARTRIDGE

FEATURES

- Class A/B Fire: AFFF (Aqueous Film Forming Foam).
- Class A Fire: Water.
- BIS Approved and ISI marked.
- Cartridge type
- Brass forged cap with auto safety release mechanism at 21 kg/cm²
- Hydraulically tested as per standard with anti-corrosive treatment.
- UV Resistant - High quality Pure Polyester (PP) powder coating.
- PVC Braided hose with SS protection spring to avoid kink and shut off nozzle.
- Easy & more economical to refill, maintain & service
- Conformity standard IS 16018:2012



Water Type Suitable for Class A Fire Risk

Foam Type Suitable for Class A and Class B Fire Risk



Class A



Class A



Class B



PERFORMANCE DATA

MODEL (RQ SERIES)*	KFMRQ-45	KFMRQ-60	KFMRQ-90 KFMRQ-100	KFMRQ-135 KFMRQ-150	WATER**	
					KFWRQ-45	KFWRQ-60
Capacity	45 Ltr	60 Ltr	90 / 100 Ltr	135 / 150 Ltr	45 Ltr	60 Ltr
Design	Hose & Nozzle	Hose & Nozzle	Hose & Nozzle	Hose & Nozzle	Hose & Nozzle	Hose & Nozzle
Fire Rating	20A:233B	20A:233B	–	–	–	20A
Height (Approx.)	1000 mm	1200 mm	1020 mm	1320 mm	1000 mm	1200 mm
Diameter (Approx.)	300 ± 10 mm	300 ± 10 mm	480 ± 10 mm	480 ± 10 mm	300 ± 10 mm	300 ± 10 mm
Average Discharge time	Min. 30 Sec	Min. 30 Sec	Min. 30 Sec	Min. 30 Sec	Min. 30 Sec	Min. 30 Sec
Average Range of throw (Min. 6 m)	9 m	9 m	9 m	9 m	9 m	9 m
Average % Discharge	Min. 90%	Min. 90%	Min. 90%	Min. 90%	Min. 90%	Min. 90%
Operating Temperature	+5 °C to +55 °C					
Service/Max. service/Test Pressure	14 / 17 / 35 bar					
Expelling Agent	Carbon Dioxide gas					
CO ₂ gas Cartridge (gm)	300 Grams	300 Grams	–	–	300 Grams	300 Grams
CO ₂ External Cylinder (kg)	–	–	2 kg	2 kg	–	–
Empty Weight (Approx.)	40 kg	48	–	–	40 kg	48 kg
Full Weight (Approx.)	85 kg	108	–	–	85 kg	108 kg
Shipping Weight (Approx.)	90 kg	115	–	–	90 kg	115 kg
Packing Standard	Corrugated paper & Jute Bags					
Approvals	BIS		–	–	–	BIS

* HQ Series available with High Quality foam agent

** Water is also available in 90,100,135 and 150 Ltrs capacity

FOAM & WATER MOBILE EXTINGUISHERS STORED PRESSURE

FEATURES

- Aqueous Film Forming Foam (AFFF) is capable of fighting against Class A and Class B fires.
- Water types are capable of fighting class A fire effectively.
- High quality Pure Polyester (PP) powder coating (UV Resistant)
- Spray nozzle to provide high fire rating
- Brass forged valve with auto safety release mechanism
- Easy to maintain, recharge & service
- PVC braided hose provided with 300mm SS Protection Spring to avoid kink and the hose is far more flexible than normal hose
- Conformity standard IS 16018:2012



Water Type Suitable for Class A Fire Risk

Foam Type Suitable for Class A and Class B Fire Risk



Class A



Class A



Class B



PERFORMANCE DATA

MODEL (RQ SERIES)*	KFMSRQ-45	KFMSRQ-60	WATER**	
			KFWSRQ-45	KFWSRQ-60
Capacity	45 Ltr	60 Ltr	45 Ltr	60 Ltr
Design	Hose & Nozzle			
Fire Rating	20A:233B*	20A:233B	20A*	20A*
Height (Approx.)	1000 mm	1200 mm	1000 mm	1200 mm
Diameter (Approx.)	300 ± 10 mm	300 ± 10 mm	300 ± 10 mm	300 ± 10 mm
Average Discharge time	Min. 30 Sec	Min. 30 Sec	Min. 30 Sec	Min. 30 Sec
Average Range of throw (Min. 6 m)	9 m	9 m	9 m	9 m
Average % Discharge	Min. 90%	Min. 90%	Min. 90%	Min. 90%
Operating Temperature	+5 °C to +55 °C			
Service/Max. service/Test Pressure	15 / 18 / 35 bar			
Expelling Agent	Nitrogen UHP grade			
Empty Weight (Approx.)	40 kg	48	40 kg	48 kg
Full Weight (Approx.)	85 kg	108	85 kg	108 kg
Shipping Weight (Approx.)	90 kg	115	90 kg	115 kg
Packing Standard				
Approvals	—	BIS	—	—

* Indicates factory tested

Caution : Don't use on Electrical Fire.



CARBON DIOXIDE TYPE FIRE EXTINGUISHER SERIES

KANEX CO2 fire extinguishers are characterized by their high performance for fires involving an electrical risk like computers, office equipment and generators etc. CO2 is non-conductive, clean and safe, ensuring minimal damage to electrical equipment and furnishings.

Ideal Use



Chemical
Manufacturing Plant



Oil Rig



Warehouses



Airport



Construction
sites



Laboratories

CO₂ PORTABLE EXTINGUISHER

FEATURES

- Carbon Di Oxide is Colorless, Odorless, Non Toxic and provides rapid knockdown of industrial fires
- BIS Approved and ISI marked
- PESO / CCOE Approved cylinder body and confirms to IS:7285
- High grade Enamel Painted externally with PO Red finish
- Wheel operated Controllable discharge
- High pressure Brass valve confirms to IS:3224 which is provided with pressure relief disc
- Rechargeable and easy to service
- Non conductive agent for electrical use without risk to operator
CO₂ gas disappears quickly leaving no residue
- Swivel horn for 2 & 3 kg with no freeze burn, with greater directional control of Co₂ discharge through horn rotation feature
- Conformity standard IS 15683:2018



Class A



Class B



Electrical



Available in squeeze grip as well as in wheel type discharge mechanism.

Available in Aluminum body also which makes extinguisher lighter weight compared to Manganese steel bodies and longer life

PERFORMANCE DATA

MODEL (WHEEL TYPE VALVE)	KFCRQ-2	KFCRQ-3	KFCRQ-4.5
MODEL (SQUEEZE GRIP VALVE)	KFCSQZRQ-2	KFCSQZRQ-3	KFCSQZRQ-4.5
MODEL (ALUMINUM BODY)	KFCHQ-2-AL	—	KFCHQ-4.5-AL
Capacity	2 kg	3 kg	4.5 kg
Design	Bend Pipe & Horn	Bend Pipe & Horn	Hose & Horn
Fire Rating	21B	34B	55B
Height (Approx)	580 mm	545 mm	700 mm
Diameter (Approx)	108 ± 5 mm	140 ± 5 mm	140 ± 5 mm
Average Discharge time	9 Sec	11 Sec	12 Sec
Average Range of throw	2 m	2 m	2 m
Average % Discharge	98%	98%	98%
Operating Temperature	-30 °C to +60 °C		
Service/Max. service/Test Pressure	60 / 105 / 250 bar		
Empty Weight (Approx.)	6.9 or 6.2 kg	9.5 or 8.4 kg	12.5 or 11.9 kg
Full Weight (Approx.)	8.9 or 8.2 kg	12.5 or 11.4 kg	17 or 16.4 kg
Shipping Weight (Approx.)	9 or 8.3 kg	12.8 or 11.7 kg	17.4 or 16.8 kg
Packing Standard	Corrugated Box		
Mounting Bracket	Wall Bracket		
Approval	BIS & PESO		

* Indicates Non-ISI product

CO₂ MOBILE EXTINGUISHERS

FEATURES

- Carbon Di Oxide is Colorless, Odorless, Non Toxic and provides rapid knockdown of industrial fires.
- BIS Approved and ISI marked
- CCOE/PESO approved cylinder body and confirms to IS:7285
- High grade enamel painted externally with PO Red finish
- Wheel Operated Controlled discharge
- High pressure Brass valve confirms to IS:3224 which provided with pressure relief disc
- Rechargeable and easy to service
- Non conductive agent for electrical use without risk to operator
- CO₂ gas disappears quickly leaving no residue
- Wire Braided Hose & Flat Horn with Diffuser Nozzle for dispersed discharge of Carbon Di Oxide
- Conformity standard IS 16018:2012



Class B



Class C



Electrical

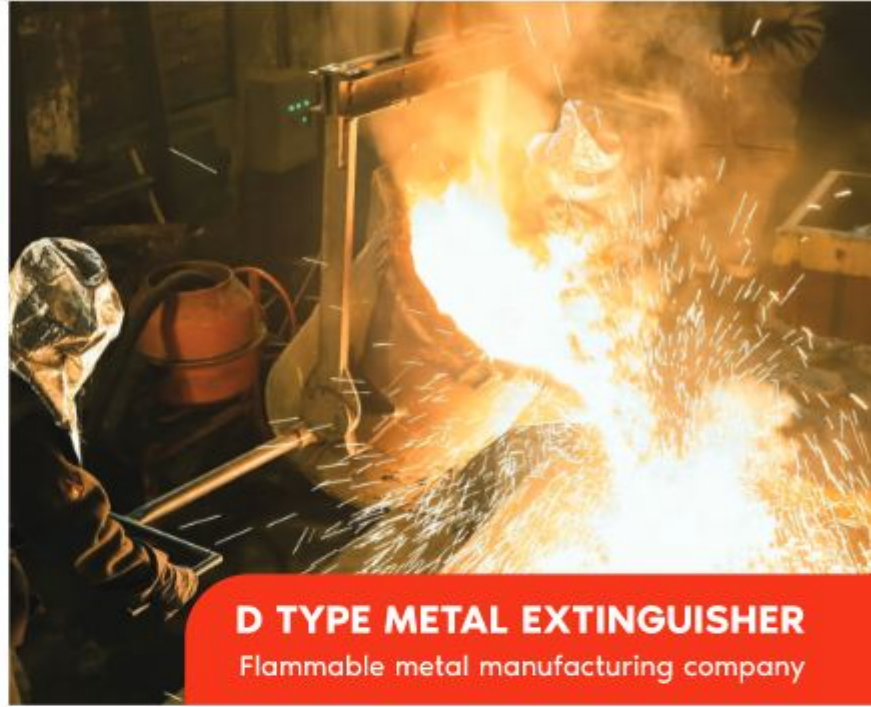


PERFORMANCE DATA

MODEL (WHEEL TYPE VALVE)	KFCRQ-6.5	KFCRQ-9	KFCRQ-22.5
Capacity	6.5 kg	9 kg	22.5 kg
Design	Hose & Horn	Hose & Horn	Hose & Horn
Fire Rating	55B	55B	89B
Height (Approx)	960 mm	1250 mm	1155 mm
Diameter (Approx)	140 ± 10 mm	140 ± 10 mm	232 ± 10 mm
Average Discharge time	20 Sec	30 Sec	35 Sec
Average Range of throw	3 m	3 m	4 m
Average % Discharge	96%	96%	96%
Operating Temperature	-30 °C to +55 °C		
Service/Max. service/Test Pressure	60 / 105 / 250 bar		
Empty Weight (Approx.)	16.5 or 18.5 kg	25 or 26 kg	61.5 or 63.5 kg
Full Weight (Approx.)	23 or 25 kg	34 or 36 kg	84 or 86 kg
Shipping Weight (Approx.)	24 or 26 kg	35 or 37 kg	85 or 87 kg
Packing Standard	Corrugated paper & Jute Bags		
Approval	BIS		



WATERMIST TYPE EXTINGUISHER
Office



D TYPE METAL EXTINGUISHER
Flammable metal manufacturing company



NON MAGNETIC MRI EXTINGUISHER
MRI Rooms



F CLASS EXTINGUISHER
Kitchens

SPECIAL APPLICATION FIRE EXTINGUISHER SERIES

WATERMIST TYPE STORED PRESSURE EXTINGUISHER

FEATURES

- DM Water with AFFF foam additive capable of fighting against class A, B, C, F (Kitchen) & Electrically started fires
- HQ series products are designed to achieve the best Fire Rating
- CE marked, brass chrome plated valve with Controllable discharge mechanism and Large loop Stainless steel Pull pin
- EPDM Rubber braided hose is far more flexible than the PVC braided hose and also far less prone to cracks
- Internally Plastic coated and Externally Pure Polyester (PP) powder coated (UV Resistant)
- Hydraulically tested as per standard requirements
- Anti-corrosive treatment: Semi Automatic Seven tank Hot dipping Phosphate treatment Process
- Helium Leak Detection tested for leakage, leak rate up to 1×10^{-8} mbar.l/sec.
- Easy to maintain, recharge & service
- BIS Approved (IS 15683:2018), ISI marked and CE Certified



Class A



Class B



Class C



Electrical



Class F



PERFORMANCE DATA

MODEL	KFWMSHQ-2	KFWMSHQ-3	KFWMSHQ-4	KFWMSHQ-6	KFWMSHQ-9
Capacity	2 Ltr	3 Ltr	4 Ltr	6 Ltr	9 Ltr
Design	Hose & Nozzle				
Fire Rating (BIS)	1A : 34B : 5F	1A : 55B : 15F	1A : 55B : 15F*	2A : 113B : 25F	3A : 183B : 75F
Fire Rating (EN rating)	15F	5A : 21B : 25F	5A : 21B : 25F	8A : 34B : 40F	—
Height (Approx.)	390 mm	440 mm	495 mm	570 mm	640 mm
Diameter (Approx.)	140 ± 5 mm	140 ± 5 mm	150 ± 5 mm	180 ± 5 mm	190 ± 5 mm
Average Discharge time	15 Sec	18 Sec	28 Sec	32 Sec	44 Sec
Average Range of throw	3 m	3.5 m	3.5 m	4 m	4 m
Average % Discharge	97%	97%	97%	97%	97%
Operating Temperature	+5 °C to +60 °C				
Service/Max. service/Test Pressure	15 / 18 / 35 bar				
Expelling Agent	Nitrogen (UHP Grade)				
Empty/Full/Shipping Weight (Aprx.)	2.2 / 4.2 / 4.5 kg	2.9 / 5.9 / 6.3 kg	3.4 / 7.4 / 7.8 kg	5.3 / 11.3 / 11.7 kg	6.0 / 15.0 / 15.5 kg
Mounting Bracket	Wall Bracket				
Approvals	BIS & CE		CE	BIS & CE	BIS

* Indicates factory tested

NON MAGNETIC-MRI EXTINGUISHER

FEATURES

- UL Listed FE 36 (HFC 236fa) gas is compliant with ASTM-D6541-11 also approved by US EPA (Environmental Protection Agency), Listing under USA Signification New Alternative Policy (SNAP)
- Hydraulically tested as per standard requirements
- Smooth Finish Aluminum body to give aesthetic impression
- Unique Gauge Testing System (UGTS) mechanism
- Helium Leak Detection tested for leakage, leak rate up to 1×10^{-8} mbar.l/sec.
- CE marked, brass chrome plated valve with Controlled discharge mechanism and Large loop Stainless steel Pull pin
- Easy to maintain, recharge & service
- EPDM Rubber braided hose is far more flexible than the PVC braided hoses and also far less prone to cracks
- CE Certified



Class A



Class B



Class C



Electrical



PERFORMANCE DATA

MODEL	KCAHQMRI-2-FE36	KCAHQMRI-4-FE36	KCAHQMRI-6-FE36
Capacity	2 kg	4 kg	6 kg
Design	Hose & Nozzle	Hose & Nozzle	Hose & Nozzle
Fire Rating	1A : 21B*	2A : 34B*	2A : 55B*
Fire Rating (As per EN)	5A : 21B	8A : 34B	8A : 55B
Height (Approx.)	430 mm	445 mm	610 mm
Diameter (Approx.)	108 ± 5 mm	152 ± 5 mm	152 ± 5 mm
Average Discharge time	9 Sec	14 Sec	22 Sec
Average Range of throw	3 m	3.5 m	4.0 m
Average % Discharge	96%	96%	96%
Operating Temperature	-30 °C to +60 °C		
Service/Max. service/Test Pressure	10 / 12 / 35 bar		
Expelling Agent	Nitrogen (UHP Grade)		
Empty/Full/Shipping Weight (Approx.)	1.4 / 3.4 / 3.8 kg	2.0 / 6.0 / 6.4 kg	3.0 / 9.0 / 9.5 kg
Mounting Bracket	Wall Bracket		
Approvals	CE		

* Indicates factory tested

F CLASS STORED PRESSURE EXTINGUISHER SS FINISH

FEATURES

- Wet chemical (Mixture of potassium acetate, potassium citrate or potassium carbonate) capable of fighting against Class A and F fires
- Discharge Nozzle is made up of PVC & Brass and design allows a broad, dispersed discharge of agent that delivers a high volume, low velocity delivery of wet chemical which does not cause the cooking oil to splash
- Unique Gauge Testing System (UGTS) Mechanism
- CE marked, brass chrome plated valve with Controllable discharge mechanism and Large loop Stainless steel Pull pin
- EPDM Rubber braided hose is far more flexible than the PVC braided hoses and also far less prone to cracks
- Hydraulically tested as per standard requirements
- Smooth Finish stainless steel body to give aesthetic impression Helium Leak Detection tested for leakage, leak rate up to 1×10^{-8} mbar.l./sec.
- Easy to maintain, recharge & service



Class A



Class F



PERFORMANCE DATA

MODEL	KFKHQ-2	KFKHQ-3	KFKHQ-4	KFKHQ-6	KFKHQ-9
Capacity	2 Ltr	3 Ltr	4 Ltr	6 Ltr	9 Ltr
Design	Hose & Nozzle	Hose & Nozzle	Hose & Nozzle	Hose & Nozzle	Hose & Nozzle
Fire Rating (BIS)	—	15F	—	25F	—
Fire Rating (EN)	15F	5A : 25F	5A : 25F	8A : 25F	8A : 75F
Height (Approx.)	440 mm	500 mm	500 mm	550 mm	610 mm
Diameter (Approx.)	110 ± 5 mm	140 ± 5 mm	140 ± 5 mm	150 ± 5 mm	180 ± 5 mm
Average Discharge time	10 Sec	12 Sec	15 Sec	20 Sec	30 Sec
Average % Discharge	95%	95%	96%	96%	96%
Operating Temperature	+5 °C to +60 °C				
Service/Max. service/Test Pressure	10 / 12 / 35 bar				
Expelling Agent	Nitrogen (UHP Grade)				
Empty/Full/Shipping Weight (Aprx.)	1.5 / 3.5 / 3.9 kg	2.5 / 5.5 / 5.9 kg	2.5 / 6.5 / 6.9 kg	2.8 / 8.8 / 9.2 kg	3.6 / 12.6 / 13.1 kg
Packing Standard	Corrugated box				
Mounting Bracket	Wall Bracket				
Approvals	CE	BIS & CE	CE	BIS & CE	CE

D TYPE METAL FIRE EXTINGUISHERS

PRINCIPLE OF OPERATION

- D type Fire Extinguishers contains a blended Sodium Chloride based dry powder.
Heat from the fire causes it to cake and form a crust excluding air and dissipating heat from burning metal.
- Metal fires involving magnesium, sodium, potassium and sodium-potassium alloys can be successfully extinguished with Sodium Chloride based extinguishers. And Lithium, zirconium, uranium, titanium, and powdered aluminum fires can be controlled and extinguished with unique Special extinguisher with extinguishing agent as Ternary Eutectic Chloride (TEC).



Class-D



TEC POWDER	SODIUM CHLORIDE
<ul style="list-style-type: none"> •TEC works for all type of Metals including Lithium and its alloys too. •The unique composition of ternary eutectic chloride of alkali metals gives fast & effective fire knock down capability, which cannot be matched by ordinary mixtures of chloride salts or phosphate base powders. 	<ul style="list-style-type: none"> •Sodium Chloride works well for metal fires involving magnesium, sodium (spills and in depth) potassium alloys, uranium, powdered Aluminum etc. •For lithium and its alloys it cannot works

PERFORMANCE DATA

MODEL (MAP POWDER)	KFDMSRQ-4	KFDMSRQ-6	KFDMSRQ-9	KFDMRQ-25	KFDMRQ-50	KFDMRQ-75
Capacity	4 kg	6 kg	9 kg	25 kg	50 kg	75 kg
Design	Hose & Applicator			Trolley Mounted, Hose & Applicator		
Height (Approx)	490 mm	530 mm	575 mm	1020 mm	1030 mm	1320 mm
Diameter (Approx)	140 ± 5 mm	150 ± 5 mm	180 ± 5 mm	300 ± 10 mm	400 ± 10 mm	400 ± 10 mm
Average Discharge time	25 Sec	30 Sec	30 Sec	45 Sec	60 Sec	90 Sec
Average % Discharge	85%	85%	85%	85%	85%	85%
Operating Temperature	-30 °C to +60 °C					
Service / Max. Service / Test Pr.	15 / 18 / 35 bar			14 / 17 / 35 bar		
Expelling Agent	Nitrogen (UHP Grade)			Nitrogen Gas cylinder with regulator		
N ₂ Cylinder Capacity	—	—	—	3 Ltr	6.8 Ltr	6.8 Ltr
Empty/Full/Shipping Weight (Appr.)	2.8 / 6.8 / 7.2 kg	3.1 / 9.1 / 9.5	5 / 14 / 14.5 kg	59 / 84 / 85 kg	70 / 120 / 121 kg	75 / 150 / 151 kg
Packing Standard	Corrugated Box			Corrugated paper & Jute Bags		
Mounting Bracket	Wall Bracket			—		
Approval	—			BIS		—



LITHIUM ION STORED PRESSURE FIRE EXTINGUISHER SERIES

KANEX - EXTINGUISHER -AVD Lithium-ion batteries are popular because of how much power they can put out at a given size and weight in comparison to old lead type batteries. However, lithium-ion batteries are extremely sensitive to high temperatures and inherently flammable. These battery packs tend to degrade much faster than they normally would, due to heat. If a lithium-ion battery pack fails, it will burst into flames and can cause widespread damage.

Ideal Use



Factories



Office

How does AVD emulsion work?

The vermiculite particles within the mist are deposited on the surface of the burning fuel to create a film over the top of the fire. The film instantly dries and, because the high aspect ratio platelet particles overlap and bind together, a non-flammable oxygen barrier between the fuel and the atmosphere is produced.

This process has a cooling effect on the fuel source and, as the water content in AVD is evaporated, the vermiculite platelets begin to build up and the fire is brought under control.



Class A



Electrical



Li-Ion Battery



When lithium-ion batteries are exposed to heat, physical/impact damage or overcharging, they go into thermal runaway.



The cells are sufficiently swollen, releasing hot flammable gases (hydrocarbons) that are formed as the electrolyte dissociates.



The hydrocarbons burn vigorously at high temperatures and rapidly spread the fire to the surrounding cells and flammable materials.



AVD encapsulates the fuel source and insulates the cells, preventing further propagation of thermal runaway - bringing the fire under control.



AVD is applied as a fine mist, which instantly cools the batteries and extinguishes the flames.

PERFORMANCE DATA

MODEL	KFLIHQ-1	KFLIHQ-2	KFLIHQ-4	KFLIHQ-6	KFLIHQ-9
Capacity	1 Ltr	2 Ltr	4 Ltr	6 Ltr	9 Ltr
Design	Nozzle		Hose with Nozzle		
Fire Rating (As per EN)	3A*	1A	3A*	3A	13A*
Height (Approx.)	325 mm	370 mm	490 mm	570 mm	640 mm
Diameter (Approx.)	86 ± 5 mm	106 ± 5 mm	140 ± 5 mm	150 ± 5 mm	180 ± 5 mm
Average Discharge time	25 Sec	50 Sec	80 Sec	120 Sec	170 Sec
Average Range of throw	1.5 - 2 m	1.5 - 2 m	1.5 - 2 m	1.5 - 2 m	1.5 - 2 m
Average % Discharge	97%	97%	97%	97%	97%
Operating Temperature	+5 °C to +60 °C				
Service/Max. service/Test Pressure	15 / 18 / 35 bar				
Expelling Agent	Nitrogen (UHP Grade)				
Empty/Full/Shipping Weight (Aprx.)	1.2 / 2.2 / 2.5 kg	1.5 / 3.5 / 3.9 kg	2.7 / 6.7 / 7.1 kg	2.9 / 8.9 / 9.3 kg	5 / 14 / 14.5 kg
Mounting Bracket	VEHICLE MOUNTED / WALL MOUNTED		WALL MOUNTED		
Approvals	—	BIS	—	BIS	—

* Indicates factory tested



AUTOMATIC TYPE MODULAR **FIRE EXTINGUISHER SERIES**

KANEX AUTOMATIC FIRE EXTINGUISHERS which keeps guard and extinguishes fire quickly and efficiently. In the event of fire, Kanex Modular type extinguishers activate automatically, spraying the extinguishing agent with maximum force, ensuring that the fire is brought under control rapidly and efficiently

Ideal Use



Switch gears



Office



Sensitive data storage



Aircraft's



Boats



Laboratories

AUTOMATIC TYPE CLEAN AGENT MODULAR EXTINGUISHER

FEATURES

- UL Listed FE 36 (HFC 236fa) gas is compliant with ASTM-D6541-11 also approved by US EPA (Environmental Protection Agency), Listing under USA signification New Alternative Policy (SNAP)
- Unique Gauge Testing System (UGTS) mechanism
- Internally Epoxy Polyester (EP) and Externally Pure Polyester (PP) powder coated (UV Resistant)
- Anti-corrosive treatment: Semi Automatic Seven tank Hot dipping Phosphate treatment Process
- Helium Leak Detection tested for leakage, leak rate up to 1×10^{-8} mbar.l/sec.
- Provides security in case of emergencies and power failure without power backup Automatic and reliable security round the clock
- Easy to maintain, recharge & service
- Welding Procedure (WPS) approved by TPI with 6G



PERFORMANCE DATA

MODEL (RQ SERIES)*	KMCRQ-2	KMCRQ-5	KMCRQ-10	KMCRQ-15
MODEL (HQ SERIES)	KMCHQ-2-FE36	KMCHQ-5-FE36	KMCHQ-10-FE36	KMCHQ-15-FE36
Capacity	2 kg	5 kg	10 kg	15 kg
Design	Ceiling Mounted	Ceiling Mounted	Ceiling Mounted	Ceiling Mounted
Height (Approx)	380 mm	375 mm	405 mm	425 mm
Diameter (Approx)	150 ± 10 mm	230 ± 10 mm	300 ± 10 mm	400 ± 10 mm
Average Discharge time	4-5 Sec	6-8 Sec	10-15 Sec	15-20 Sec
Hanging height above risk	1.5 Mtr	1.5 to 2 Mtr	1.75 to 2.25 Mtr	2 to 3 Mtr
Area Protection	1 to 1.5 m ²	2 to 2.5 m ²	4 to 5 m ²	5 to 6 m ²
Average % Discharge	99%	99%	99%	99%
Operating Temperature	-30 °C to +60 °C			
Service / Test Pressure	15 / 35 bar			
Expelling Agent	Nitrogen (UHP grade)			
Empty / Full / Shipping Wt.(Approx)	1.56 / 3.56 / 3.75 kg	2.64 / 7.64 / 7.8 kg	4.11 / 14.11 / 14.5 kg	6.4 / 21.4 / 22 kg
Mounting Bracket	Ceiling mounting stand			
Approvals	CE			

* RQ Series available with other Clean Agent gas



Chemours (Formerly known as DuPont) FE 36 Clean Agent Approvals

AUTOMATIC TYPE POWDER MODULAR EXTINGUISHER

FEATURES

- Hydraulically tested as per standard and passed through anti-corrosive treatment
- An Automatic Detection and Suppression System together in a single unit quite unlike any other system available in the market
- Automatic round-the-clock protection
- Automatic operation, hence no human involvement, reducing the chances of injury and accidents to virtually zero.
- Proves to be the most economical when compared to other systems
- Reusable cylinder as it is not based on aerosol technology. Hence, most economical
- Non-Freezing & long lasting
- Provides securities in case of emergencies and power failure without power backup
- Rechargeable and easy to service
- Extinguishing medium is Mono Ammonium Phosphate powder



Class A



Class B



Class C



Electrical

PERFORMANCE DATA

MODEL (MAP 50% POWDER)	KMPRQ-2-50%	KMPRQ-5-50%	KMPRQ-10-50%	KMPRQ-15-50%
MODEL (MAP 90% POWDER)*	KMPRQ-2-90%	KMPRQ-5-90%	KMPRQ-10-90%	KMPRQ-15-90%
Capacity	2 kg	5 kg	10 kg	15 kg
Design	Ceiling Mounted	Ceiling Mounted	Ceiling Mounted	Ceiling Mounted
Height (Approx)	380 mm	375 mm	405 mm	425 mm
Diameter (Approx)	150 ± 10 mm	230 ± 10 mm	300 ± 10 mm	400 ± 10 mm
Average Discharge time	4-5 Sec	6-8 Sec	10-15 Sec	15-20 Sec
Hanging height above risk	1.5 Mtr	1.5 to 2 Mtr	1.75 to 2.25 Mtr	2 to 3 Mtr
Area Protection	1 to 1.5 m ²	2 to 2.5 m ²	4 to 5 m ²	5 to 6 m ²
Average % Discharge	99%	99%	99%	99%
Operating Temperature	-30 °C to +60 °C			
Service / Test Pressure	15 / 35 bar			
Expelling Agent	Nitrogen (UHP grade)			
Empty Weight (Approx.)	1.5 / 3.5 / 3.8 kg	2.6 / 7.6 / 8 kg	4.1 / 14.1 / 14.5 kg	6.4 / 21.4 / 22 kg
Mounting Bracket	Ceiling mounting stand			

* HQ Series available with UL Listed MAP-90% Powder also



WATER MIST CUM COMPRESSED AIR FOAM SYSTEM (CAFS)

Kanex CAFS technology Compressed Air Foam Systems are self contained stored-energy fire suppression unit which have added ability to inject compressed air into the foam solution to generate a powerful fire attacking and suppression foam.

Ideal Use



Hospitals



Industries



Power plant



Offshore



Marine



Models:

9 & 10 litre
Portable Fire
Extinguisher
with Back Pack

50 litre
Trolley Mounted

100 litre
Trolley Mounted

250 litre
Trolley Mounted

FEATURES

- Easy to operate and highly effective
- Complete atomisation takes place inside the valve head
- Low maintenance and high reliability
- For ordinary and professional users
- Large area coverage
- Wet & Dry Foam technology for long range & more
- denser foam structure
- Tested & Passed for electrical conductivity test in NABL approved ERDA laboratory for 36kV from 1 Mtr distance with Dry mode
- Effectiveness : CAFS truly attacks all sides of the fire tetrahedron by smothering the fire with a “foam blanket”, thus preventing oxygen from combining with fuel. It diminishes the heat by insulating, using the trapped air within the bubble structure and the bubbles actually reflect radiant heat, thus preventing excess heat from adding to the fire. This prevents additional fuel from reacting with the fire by providing a barrier. Finally, CAFS has been shown to disrupt the chemical reaction required for fire to continue. CAFS is 15 to 30 times more effective than water alone or foam solution.



Class A



Class B



Electrical
(Electrical Resistant Nozzle Tip
On Request)



Fire Rating

MODEL	EN Rating
KCAFS-9	27A : 233B
KCAFS-10	43A : 233B
KCAFS-50	55A : 233-IVB
KCAFS-100/250	55 A: 233-IVB*

PERFORMANCE DATA

MODEL NO.	KCAFSHQ-9	KCAFSHQ-10	KCAFSHQ-50	KCAFSHQ-100	KCAFSHQ-250
Capacity	9 Ltr	10 Ltr	50 Ltr	100 Ltr	250 Ltr
Operating Pressure	12 - 15 bar	12 - 15 bar	12-15 bar Approx	Up to 8 bar	12-15 bar Approx
Temperature	+5° C to +60° C	+5° C to +60° C	+5° C to +60° C	+5° C to +60° C	+5° C to +60° C
Flow Rate (Ltr / Sec)	0.4-0.42 (Wet) / 0.225 (Dry)	0.43-0.46 (Wet) / 0.232 (Dry)	0.4 (Wet) / 0.165 (Dry)	0.5 (Wet) / 0.33 (Dry)	1.6 (Spray) / 0.8 (Jet)
Operating Time (Wet/Dry)	21-23 Sec (Wet) / 40 Sec (Dry)	21-23 Sec (Wet) / 43 Sec (Dry)	125 Sec (Wet) / 270 Sec (Dry)	200 Sec (Wet) / 300 Sec (Dry)	300-350 Sec (Spray)/150-200 Sec (Jet)
Work Range (Wet/Dry)	12-13 M (Wet) / 11-12 M (Dry)	12-13 M (Wet) / 11-12 M (Dry)	13-14 M (Wet) / 12-13 M (Dry)	14-15 M (Wet) / 10-12 M (Dry)	20-22 M (Spray) / 10-12 M (Jet)
Size	720 x 300 x 220 mm (H x B x T)	720 x 300 x 220 mm (H x B x T)	1130 x 570 x 480 mm (H x B x T)	900 x 1000 x 1900 mm (H x B x L)	1000 x 1150 x 2150 mm (H x B x L)
Weight (Approx)	14 KG Empty / 23 KG Filled	14 KG Empty / 24 KG Filled	70 KG Empty / 120 KG Filled	100 KG Empty / 200 KG Filled	250 KG Empty / 500 KG Filled
Fire Rating Performance	27A,233B	43A,233B	55A,233B-IVB	55A,233B-IVB & Higher *	55A,233B-IVB
Electrical Devices	Tested and Passed: at 36kV from 1mtr distance in Dry mode				—
Length of hose	1.5 M	1.5 M	5 M	10 M	10 M
Propellant	21/300 bar Compressed Air (200 bar on request)	21/300 bar Compressed Air (200 bar on request)	61/300 bar Compressed Air (200 bar on request)	10,21/300 bar Compressed Air	61/300 bar Compressed Air
Extinguishing Agent	Foam Agent (AFFF)				
Approvals	CE / ERDA / Certified from NABL accredited Lab (AFTRL lab) as per latest EN parameters			Certified from NABL accredited Lab (AFTRL lab) as per latest EN parameters	

DRY CHEMICAL POWDER FILLING MACHINE

The machine is used for filling dry chemical powder (DCP) into fire extinguishers as well as for transferring DCP from fire extinguishers to storage containers without spillage or emissions of the powder to the surroundings.



MODEL : PMACHINE-001



MODEL : PMACHINE-002

MODEL : PMACHINE-001

FEATURES

- This Model is useful for emptying, filling and sieving operations for All sizes of Fire Extinguishers.
- Emptying & Filling is absolutely dust free operations
- Inner storage of powder is up to 12KG, But we can provide 50 to 100 KG Storage tank.
- Lockable ball valves for Silo.
- There is one Inspection windows provided for powder level control.
- Cleaning of filter package & Hopper is achieved automatically.
- It contains diagonally positioned pipes with removable sieve, Which retains lumps and Contaminations.
- Height adjustments are done by Crank handle
- This machine is sufficient to Empty & Fill all portable fire extinguishers (1 to 12 KG) & additionally 25 to 75 KG movable fire extinguishers also.
- Filling of movable extinguisher is carried out with help of special filling adapter
- With use of Bigger storage tank this machine can be used for Extinguisher up to 250KG Capacity

TECHNICAL DETAILS

Max. height of work	Approx. 2 Mtr
Dimension (l x w x h)	Approx. 700 x 800 x 1800 mm
Diameter	250 mm
Filling Capacity	12-18 kg/Min (According to powder quality)

Motor	230V / 10 A / 50Hz
Filter Package	Maintenance Free
Filter Cleaning	Auto clean by AIR-MATIC Feature
Color	Hammer Finish blue
Noise Level	64 dB (A)

MODEL : PMACHINE-002

FEATURES

- The Automatic Type Powder Filling /Emptying Machine is used for filling dry chemical powder (DCP) into fire extinguishers as well for Sieving and transferring DCP from fire extinguishers to storage containers, No spillage or emissions of the powder to the surroundings shall be observed .
- Emptying and Filling is absolutely dust free.
- Unit is equipped with electronic scale which automatically operates at preset filling parameters.
- Inner storage of powder is up to 30KG, But we can provide 50 to 250 KG Storage tank
- Two Inspection windows provided for powder level control.
- Filter package and hopper Cleaning is achieved automatically.
- To retain lumps and Contaminations the machine is equipped with diagonally positioned pipes with removable sieve.
- We can fill portable extinguishers of 1 to 12 kg capacity with cutoff system.
- With use of Bigger storage tank this machine can be used for Extinguisher up to 250KG Capacity without auto cutoff.

TECHNICAL DETAILS

Max. height of work	Approx. 1.6 Mtr
Dimension (l x w x h)	Approx. 700 x 800 x 1800 mm
Diameter	250 mm
Filling Capacity	18 KG/Min

Motor	400 V / 1.5 KW / 50 Hz
Filter Package	Maintenance Free
Filter Cleaning	Auto clean by AIR-MATIC Feature
Color	Hammer finish blue
Operation	Vibration Free



IN PANEL AUTOMATIC TUBE SUPPRESSION SYSTEM (KATS)

Research shows Electrical fires, Server rack fires & Transformer fires consistently rank among the leading causes of commercial and residential fires, most of the fires starts with a just spark in electrical cabinets/panels/enclosures or due to improper handling. This often resulting in big fire then injury, death & significant property loss, costing money and downtime to business. And there is just one way to deal with them, instant detection and swift firefighting.

Ideal Use



Electrical Panels



Server Racks



CNC Machine



Dry Transformer

IN-PANEL- TUBE BASED SUPPRESSION SYSTEM (KATS)

THE SOLUTION

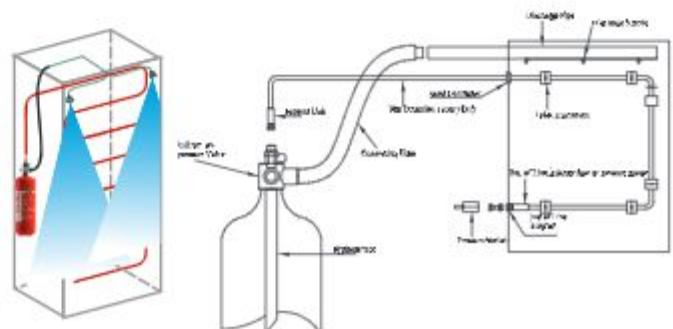
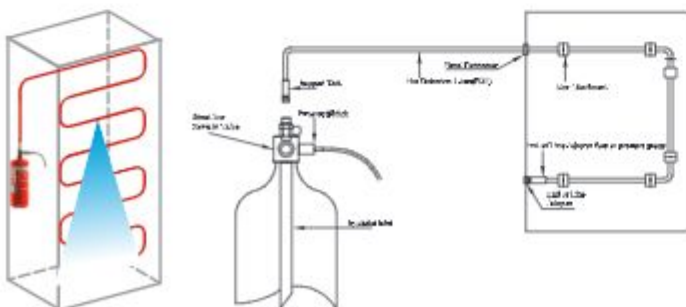
Kanex In-Panel Tube Based Suppression System (KATS) take the fire detection and suppression inside of the hazard, a growing fire can be caught quickly, preventing the spread of fire to other parts of the building that would require firefighters or water sprinklers extinguish.

The KATS system use UL listed continues linear sensor tube that reliably detects and actuates release of the extinguishing agent using pneumatic technology. It is more flexible, space efficient and cost effective.

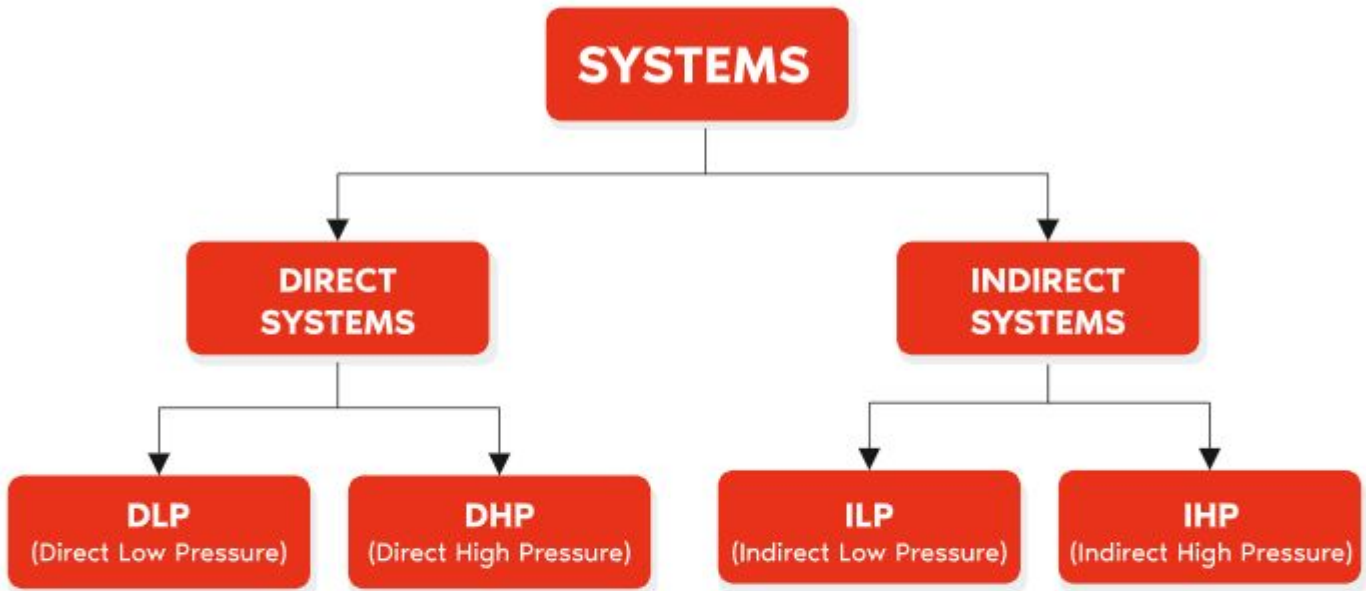


FEATURES

- Self-actuated & No external power source required.
- Suitable for all types of fire viz Class A, B, C & Electrically started Fires
- Clean Agent gas in environment friendly
- Easy to maintain, operational readiness, expansion flexibility. 100% effective
- Available in High pressure (CO₂) & Low pressure (Powder, Foam, Clean Agent gas FK-5-1-12 (Novec1230), HFC227ea (FM200) , HFC236fa (Fe36)
- 24 x 7 - Operation
- Easy to maintain & Re-installation, Re-filling.

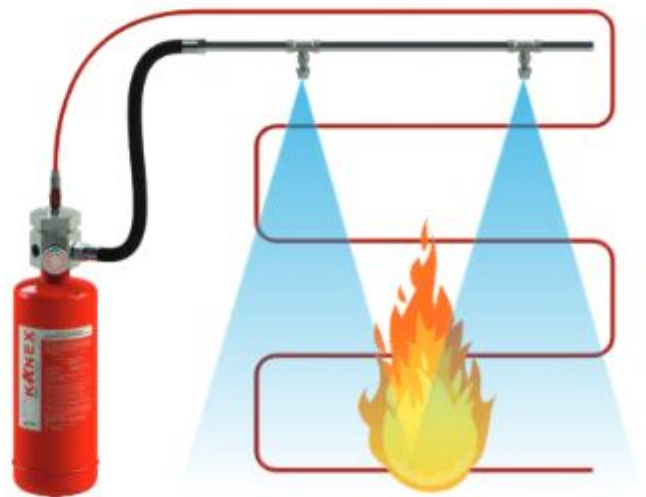
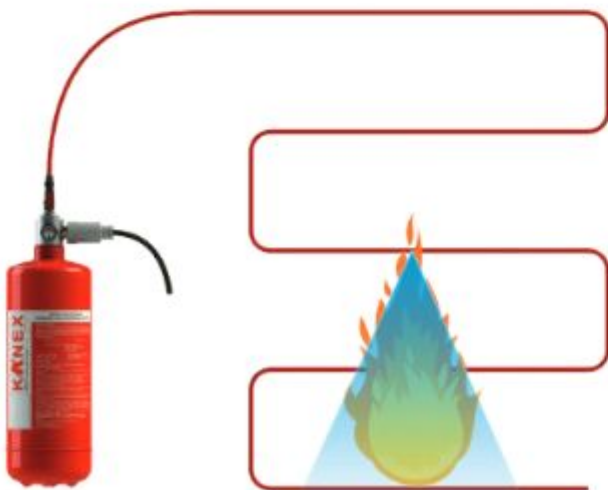


CLASSIFICATION



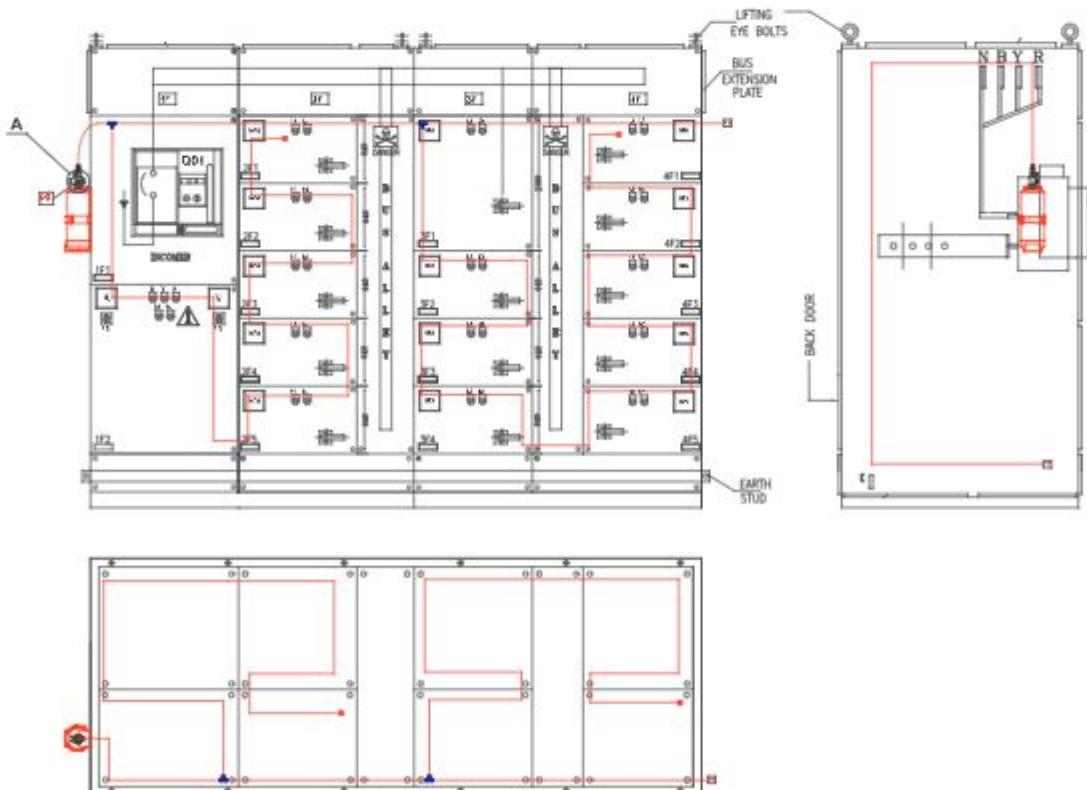
Available in Novec1230 (FK-5-1-12), FM-200 (HFC227ea) FE-36 (HFC236fa) CO₂ gas , MAP 90 ABC Powder

- The direct system utilizes Heat Sensing Tube as both fire sensing & suppression of fire by delivering the agent.
- The nearest surface of Heat Sensing Tube bursts due to heating & it forms effective discharge nozzle
- Due to which pressure drops in Heat Sensing Tube & entire content of cylinder discharges.
- The Indirect system utilizes Heat Sensing Tube as fire sensing ONLY. Suppression of fire is delivered via copper, SS or Braided pipe.
- The nearest surface of Heat Sensing Tube bursts due to heating it actuates the valve & agent discharges through strategically placed nozzles within protected enclosure



Technical Specification

Direct System		Indirect System	
Extinguishing agents	Clean Agents - FK-5-1-12 (Novec1230) , HFC227ea (FM200) , HFC236fa (FE36) , Powder , Foam , Co2	Extinguishing agents	Clean Agents - FK-5-1-12 (Novec1230) , HFC227ea (FM200) , HFC236fa (FE36) , Powder , Foam , Co2
Capacity for Low pressure (Kgs)	1 kg , 2 kg , 4 kg , 6 kg , 9 kg ,	Capacity for Low pressure (Kgs)	2 kg , 4 kg , 6 kg , 9 kg ,
Capacity for low pressure in pounds (LBS)	2.5 LBS , 5 LBS , 10 LBS	Capacity for low pressure in pounds (LBS)	5 LBS , 10 LBS
Capacity for Co2	2 kg , 4.5 kg , 6.5 kg , 9 kg	Capacity for Co2	4.5 kg , 6.5 kg , 9 kg
Cylinder	CE/PESO	Cylinder	CE/PESO
Discharge Valve (DLP)	CE	Discharge Valve (LP)	CE
Clean Agent gas	UL listed	Clean Agent gas	UL listed
Design standard for clean agent	NFPA2001:2022	Design standard for clean agent	NFPA2001:2022
Design standard for Co2	NFPA 12 : 2022	Design standard for Co2	NFPA 12 : 2022
Fire Detection Tube	UL listed	Fire Detection Tube	UL listed
End line adapter	Standard-Threaded	End line adapter	Standard-Threaded
T connector , End line plug , Tube to tube connector , slip on , spring top etc	As per EN standard	T connector , End line plug , Tube to tube connector , slip on , spring top etc	As per EN standard
Operating temperature	(-) 30 Deg C to (+) 60 Deg C	Nozzle Xit	As per standard to achieve discharge time as per NFPA & UL
		Operating temperature	(-) 30 Deg C to (+) 60 Deg C





KITCHEN HOOD- TUBE BASED SUPPRESSION SYSTEM

Kitchens tend to use large quantities of hot fat and oil for the preparation of food. These fats and oils pose a particularly high fire risk. Most fires in kitchens start in deep fryers, frying pans and grilling plates, Burners with defective overheating protection. Fat self-ignites at a temperature of 350°C. which is easily reached, and fat fires tend to spread very quickly.

Ideal Use



Electrical Panels



Server Racks



CNC Machine



Dry Transformer

The Tube type extinguishing system has been specifically designed for use in catering/commercial kitchens. The fire detection elements respond the moment the first small flame occurs, and the fire is promptly extinguished before serious damage can occur. This system works in two ways, it is sprayed through fine nozzles onto the equipment forming a blocking layer over the fat or oil so that the fire is starved of oxygen. Simultaneously, the fat is cooled down by the water contained in the agent, so preventing self-ignition. Thus this system as effective and reliable as Conventional extinguishers. Preventing renewed self-ignition.

FEATURES

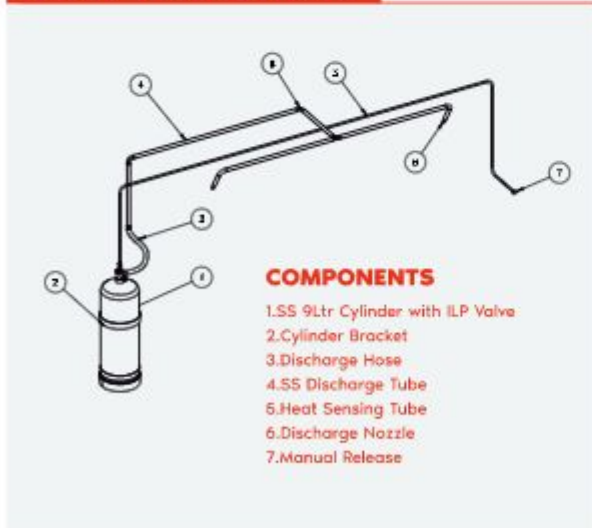
- Flexible protection
- Safety
- The pneumatic triggering
- Minimizes service stoppage during repairs
- Help prevent personnel injury



LPS 1223:Issue 2.3
Cert.No. 724b



LINE DIAGRAM



SPECIFICATION

Extinguishing Agent	Class F
Propellant	Nitrogen
Volume of Extinguishing Agent	9 Ltr
Tube Pressure	16 Bar
Burst Temperature	175°C
Cylinder Pressure	16 Bar
Working Temperature	-20° C to +50°C
Cylinder Volume	12 Ltr
Weight	13 KG



INROOM- MODULAR BASED SUPPRESSION SYSTEM (KRPS)

Ideal Use



Home



Office



Buildings



Warehouses



Farms



Wood working area

INTRODUCTION

Research & analysis demands specialised fire suppression technology for unique infrastructures, business buildings. KRPS neither demand any structural modification nor consumption of floor space as this system is mounted directly on the ceilings of space.

This system is designed with smart & sensitive elements like Smoke & heat detectors and also this minimizes the false activation by Programmed control panel.

This system comprises the following components.

SYSTEM DESCRIPTION

The ceiling mounted modular container contains extinguishing agent with its rated capacity. This container is fitted with specially designed nozzle which can protect area with optimum quantity of agent. The modular unit is attached with master control panel & panel is again attached with smoke & heat detectors.

Thus, even a smallest fire can be detected by detectors & this detectors will convey signal to control panel & panel will communicate with modular

So, panel communicates two-way with Modular as well as detectors to ensure complete operation.



Class A



Class B



Class C



Electrical



OPERATION

- The detectors will detect smoke (Smoke detectors) or temperature (Heat detectors) or both and then it will send electrical signal to control panel
- To decrease possibility of false alarm & activation the cross zonal function comes in to action. In this case control panel will act only when two or more detectors of same zone will detect the fire & send electrical signal to panel.
- Once the control panel is activated, it will start strobe light & siren. This will start for some specific time to allow to evacuate the room.
- And after some time the agent will start to discharge from nozzle with signal from relay module within specific time and the total area will be flooded
- This system is also provided with manual control switch with which whole system can be activated (or deactivated) manually if required

ADVANTAGES

- This system can be installed directly to any environment on ceiling without any drastic modification in structures
- Since the system is installed on ceiling it is unobstructive to man & material & it contains approximately no space on floor
- It can be installed to any site which is impracticable for future suppression or flooding system installation
- Cost-effective, No any bulk installation & flexible.
- As in flooding system this system doesn't require any extra room / floor for storage of extinguishing agent containers
- 24x7 protection & programmed operation

COMPONENTS

1. Rated capacity extinguisher with solenoid operative valve
2. Smoke detector
3. Heat detector
4. Master control panel
5. Manual Release (or Abort) switch
6. Hooter with strobe light
7. Relay module



PERFORMANCE DATA

MODEL	KRPS-2-CA	KRPS-5-CA	KRPS-10-CA	KRPS-15-CA	KRPS-2-DCP	KRPS-5-DCP	KRPS-10-DCP	KRPS-15-DCP
Content (Agent)	Clean agent (HFC 236fa / FE 36 / HFC 227ea / FM 200)				MAP-50% / MAP-90% / MAP-90% UL Listed Powder			
Capacity	2 kg	5 kg	10 kg	15 kg	2 kg	5 kg	10 kg	15 kg
Design	Ceiling Mounted							
Dimensional Height (Approx)	380 mm	375 mm	405 mm	425 mm	380 mm	375 mm	405 mm	425 mm
Diameter (Approx)	150 ± 10 mm	230 ± 10 mm	300 ± 10 mm	400 ± 10 mm	150 ± 10 mm	230 ± 10 mm	300 ± 10 mm	400 ± 10 mm
Average Discharge time	7-9 Sec	10-12 Sec	14-16 Sec	18-20 Sec	10-12 Sec	16-18 Sec	20-22 Sec	25-28 Sec
Floor to nozzle Height	1.5 Mtr	2.0 Mtr	2.0 Mtr	2.5 Mtr	1.5 Mtr	2.0 Mtr	2.0 Mtr	2.5 Mtr
Average % Discharge	99%	99%	99%	99%	99%	99%	99%	99%
Operating Temperature	-30 °C to +60 °C							
Service / Test Pressure	15 / 35 bar							
Expelling Agent	Nitrogen (UHP grade)							
Empty / Full Weight (Approx.)	1.56 / 3.56 kg	2.64 / 7.64 kg	4.11 / 14.11 kg	6.4 / 21.4 kg	1.56 / 3.56 kg	2.64 / 7.64 kg	4.11 / 14.11 kg	6.4 / 21.4 kg
Mounting Bracket	Ceiling mounting stand							



TOTAL FLOODING SYSTEM

Kanex total flooding system is a fixed suppression system which is arranged to automatically discharge a predetermined concentration of agent into an enclosed space for the purpose of fire extinguishment or control. Each system is custom engineered to quickly suppress fires while eliminating agent cleanup and minimizing the downtime that can be associated with other agent types.

Ideal Use



Data centres



Electrical Switching Rooms



Heritage Sites



Electrical control rooms

FEATURES

- Safe for electrical/electronic equipment.
- Environmental Friendliness
- 24X7 protection with design Flexibility
- Zero or minimum Downtime/Cleanup
- Wide acceptance

KANEX SERVICES:

1. Analysis of fire hazard
2. System design and support
3. Installation and service

WHAT ARE THE VARIOUS TYPES OF FIRE SUPPRESSION SYSTEMS AVAILABLE TODAY?

Chemical Clean Agent gases – Include 3M Novec-1230 (FK 5112), FM-200 (HFC-227ea), Fire Protection Fluid and others, all of which offer fast-acting, and most importantly, people-safe fire-suppressing solutions.

In the current scenario/field of fire suppression, Novec-1230 (Generic name: FK 5112) gas is the most recent generation of gas-based chemical extinguishing systems, with a variety of distinctive features and benefits. Novec-1230 is based on a long-term, sustainable technology with one of the highest safety margins and offers swift and reliable extinguishment with minimal environmental impact, particularly on global warming.

It works by completely flooding the area, and extinguishing the flames in a matter of seconds. It is appropriate for the dangers of classes A, B, and C. Kanex extinguishing system is completely tailored to the unique features of the agent, resulting in the most dependable and cost-effective solutions.

Inert Gases – Include nitrogen, argon and CO₂, or a combination of two or more, and reduce oxygen levels to a point where combustion cannot be sustained.

Co₂ Systems – Provide a heavy blanket of gas that reduces the oxygen level to a point where combustion cannot occur.

The system is designed as per NFPA standard.

CERTIFICATION

Certifications available Vds/FM/UL (as per Client Requirement)

Designed, Manufactured & Marketed by:
KANADIA FYR FYTER PVT. LTD.
An Iso 9001:2015 certified company

HEAD OFFICE:

Office No.502, 5th Floor, A wing,
Damji Shamji Corporate Square, Ghatkopar -Andheri Link Road,
Laxmi Nagar, Ghatkopar (E) - 400 075

WORKS:

Kanadia Fyr Fyter Pvt.Ltd.
Plot No.7-8 Paras Industrial, Estate Nr.Garibsha Pir,
Sihor-364240, Dist. Bhavnagar(Guj)

marketing@kanexfire.com | www.kanexfire.com
Presence at - PAN INDIA